

M.2 2242 SATA ET30 Series

10K P/E Cycles, Industrial Design



Features

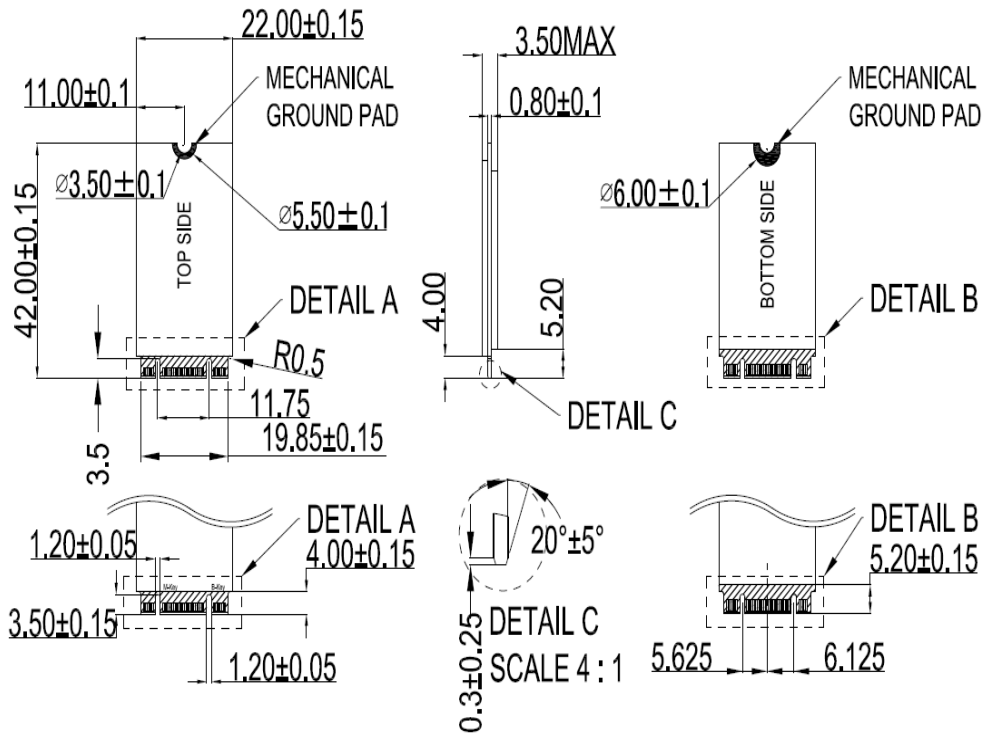
- M.2 (NGFF) standard of 22mm wide, 42mm long
- Micron B17A 3D TLC, 10K P/E Cycles
- 560/515 MB/s of Read/Write speeds
- DRAM-less, up to 512GB capacity
- Commercial/extended/wide temp. solutions
- Built-in LDPC, RAID engine data protection
- Built-in OCP/OVP
- mSMART storage device monitoring

Specification

Product Model	M.2 2242 SATA ET30
Interface	SATA III
Form Factor	M.2 SATA (2242)
Controller	SMI SM2258XT
Flash Type	3D TLC (Micron B17A)
P/E Cycle	10,000 times
Max. Channel	4
Density	64GB-512GB
Sequential R/W (MB/sec, max.)	560/515
Operating Temperature	-40°C~+85°C
Max. Power Consumption	1.82W (3.3Vx551mA)
Dimension (L x W x H/mm)	22x42x3.5
Operating Voltage	3.3V±5%
Storage Temperature	-55°C~+95°C
External DRAM Buffer	N/A
Thermal Sensor	✓
DEVSLP Mode	Optional
Vibration	20G (7-2KHz)
Shock Resistance	1500G@0.5ms
MTBF	>3 million hours

Dimensions

Unit: mm



Total Bytes Written & Ordering Information

Capacity	Industrial (-40°C~+85°C)
64GB M.2 2242 SATA SSD, TLC, 24/7, -40°C to 85°C	Z1-SP-TS0-064-242
128GB M.2 2242 SATA SSD, TLC, 24/7, -40°C to 85°C	Z1-SP-TS0-128-242
256GB M.2 2242 SATA SSD, TLC, 24/7, -40°C to 85°C	Z1-SP-TS0-256-242
512GB M.2 2242 SATA SSD, TLC, 24/7, -40°C to 85°C	Z1-SP-TS0-512-242